

Release Notes for Deliverance 1.02

What is it?

Deliverance is a hack I put together in MacPerl to automate the process of creating CD tray cards from Sonic PQ Logs.

What does it require?

In a word, MacPerl - see MacPerl's read me documents for system compatibility.

MacPerl is freely available from:

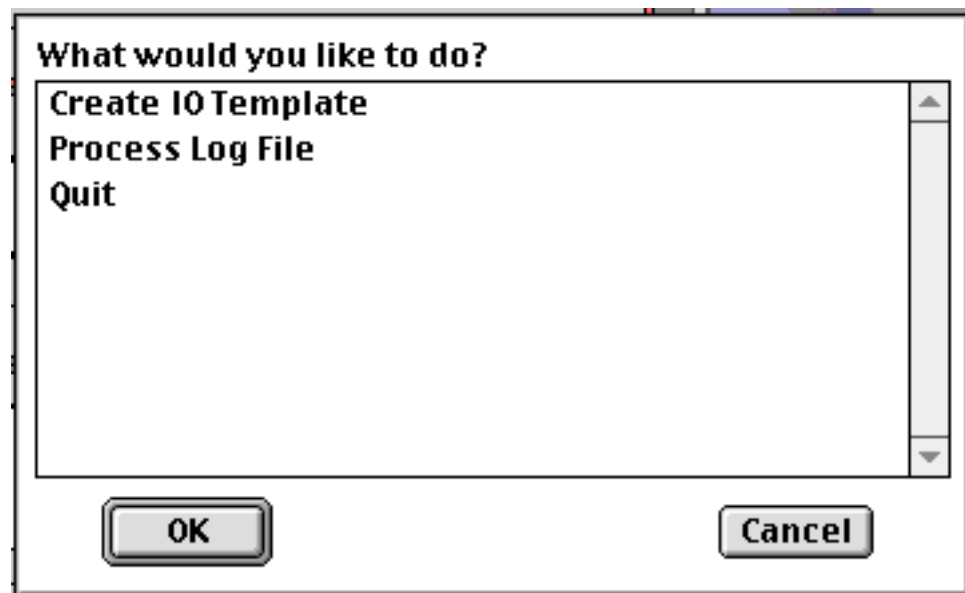
ftp.plig.org/pub/CPAN/ports/mac/Mac_Perl_52Or4_appl.bin

Installation:

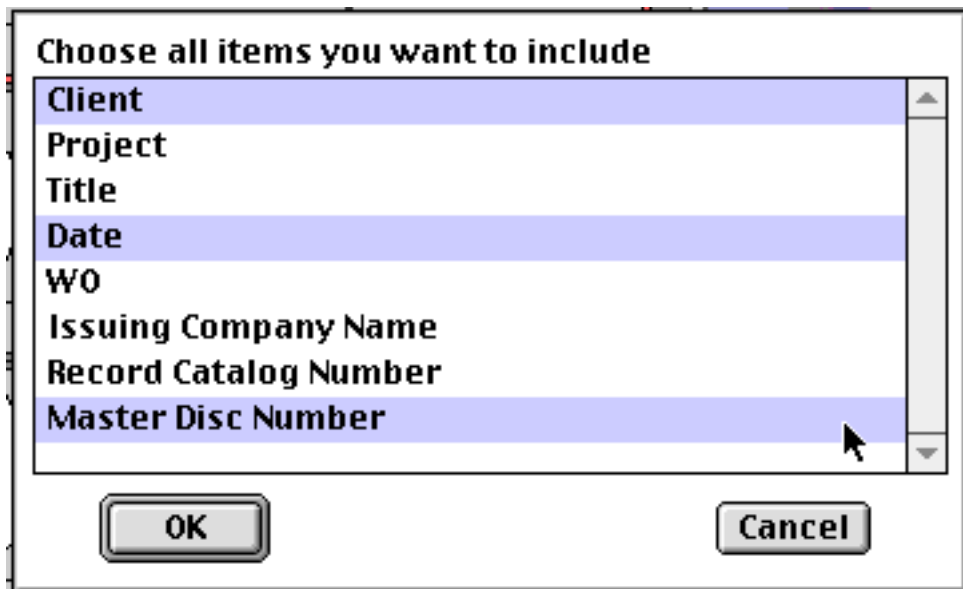
Download and install Macperl first. Then drag the folder labeled 'Deliverance Preferences' into the Preference folder in your System folder. The first time you run the script you will want to set up the default I/O parameters (see below).

How does this thing work?

When you first start the script you will be presented with a dialog box which prompts you to either define an I/O template or process a PQ Log file.



Defining an I/O Template: This is where you decide what information from the log file you wish to include in the final output. You only need to do this once, though you can save additional templates if you wish.

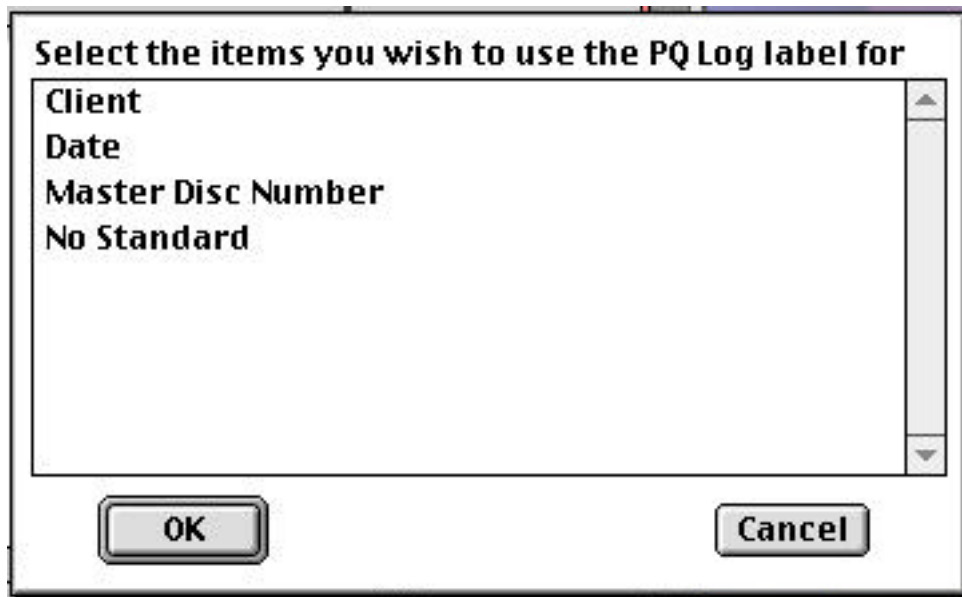


Select each and every item you wish to include on the final tray card and then hit 'OK'. Tracks and their durations will be automatically included for you.

Next you are asked if you would like to label the fields in the final output. You may use no label at all (answer 'No' here), use the standard label from the PQ Log file or create your own custom label for whichever items you wish.

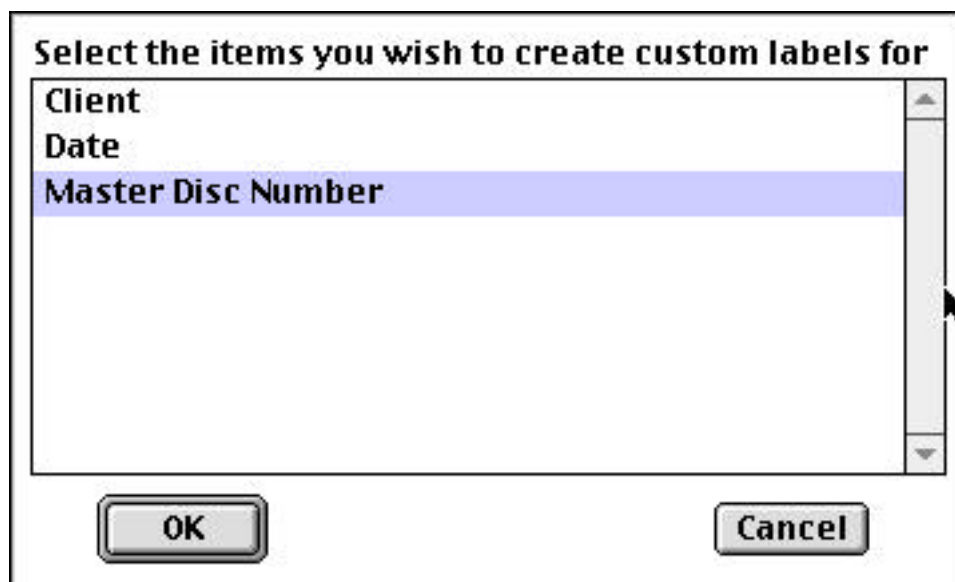


Defining Labels: If you answered 'Yes' in the previous dialog box you will first be given the opportunity to assign items a label from the Sonic PQ Log.



Each item you select in this dialog will be output with its label in tact (e.g. Client : MyClient). If you wish to only use custom labels select "No Standard" and click 'OK'.

Next you are prompted for custom labels.
Select all of the items you wish to label and click 'OK'.



You will then be prompted to enter a label for each item in turn.



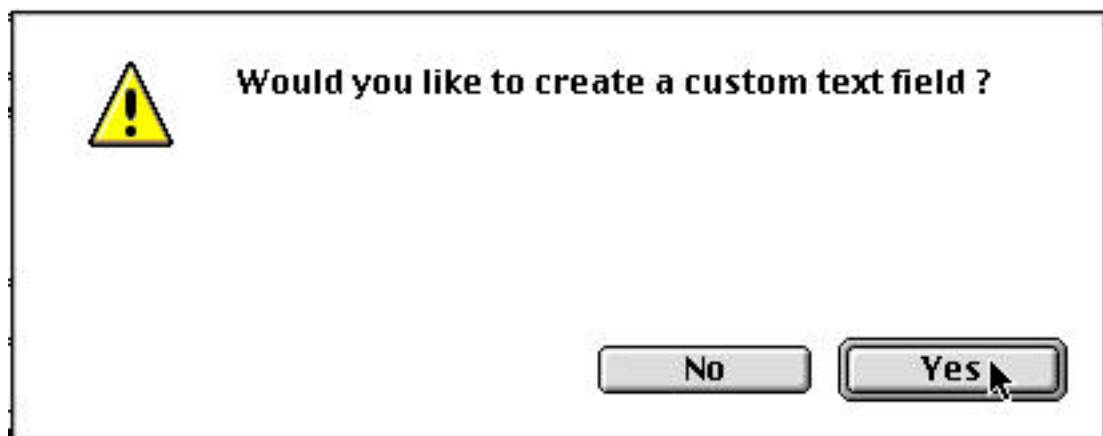
What label would you like to use for Master Disc Number?


Ref num

Cancel OK

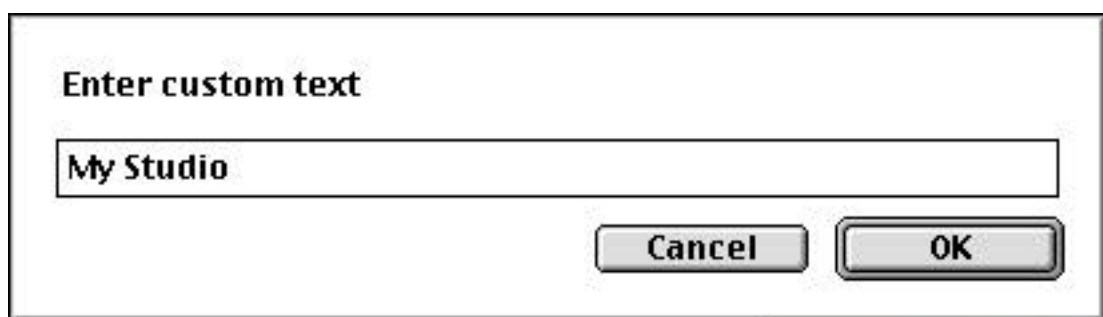
Note: The script will place a colon after your label so don't type one unless you want two (i.e. Ref num :: 15000).

Custom Text: Next you are asked if you wish to include any custom text. This can be used to include your studio name, address or whatever. Enter it one line at a time as you are prompted.



 Would you like to create a custom text field ?

No Yes



Enter custom text

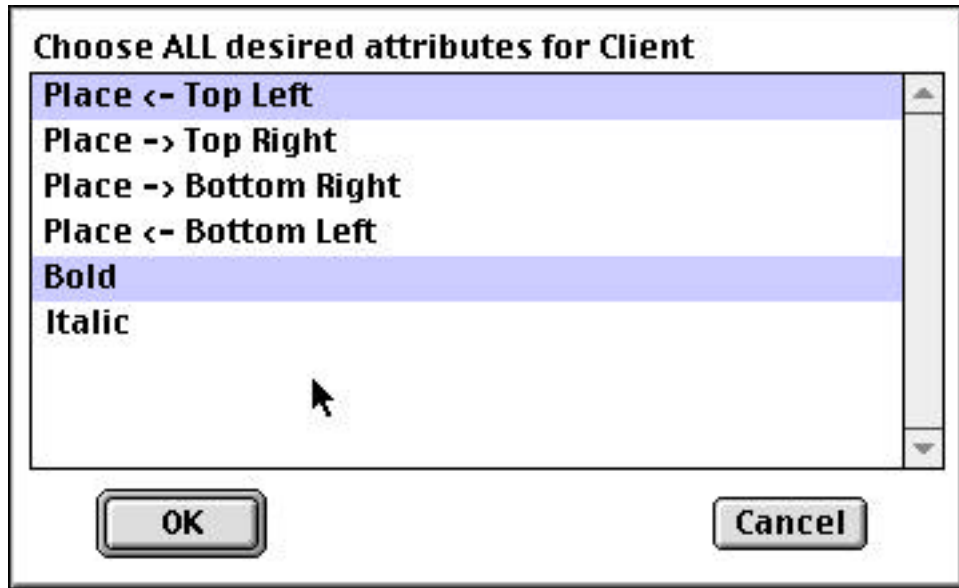
My Studio

Cancel OK

You may create as many custom text fields as you wish.

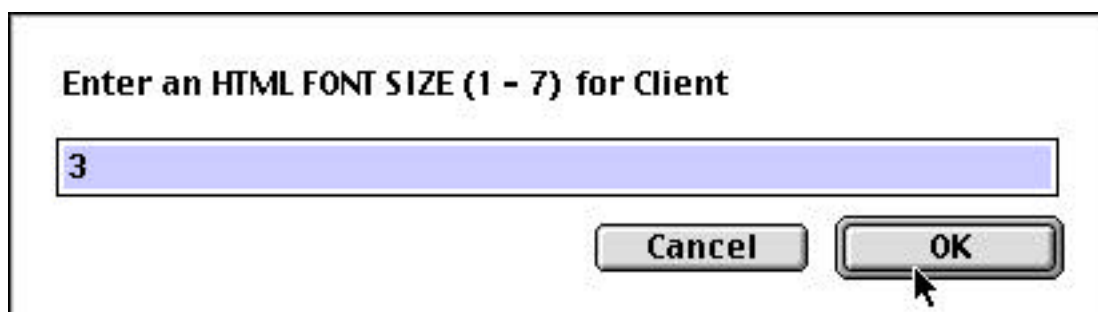
Choosing where things go and text attributes: Next you will be prompted to choose for each item where you want it placed in the final output. Deliverance outputs an HTML file, which holds a formatted table, which is divided into 2 rows each with 2 cells. Items are placed 'Top Left', 'Top Right', 'Bottom Right' and 'Bottom Left'.

You may also choose to make an item bold and or italic by selecting these in addition to the placement parameters. Do not 'OK' this dialog with out selecting one of the four Placement attributes or else the field will not appear in the tray card. I said this was a hack!

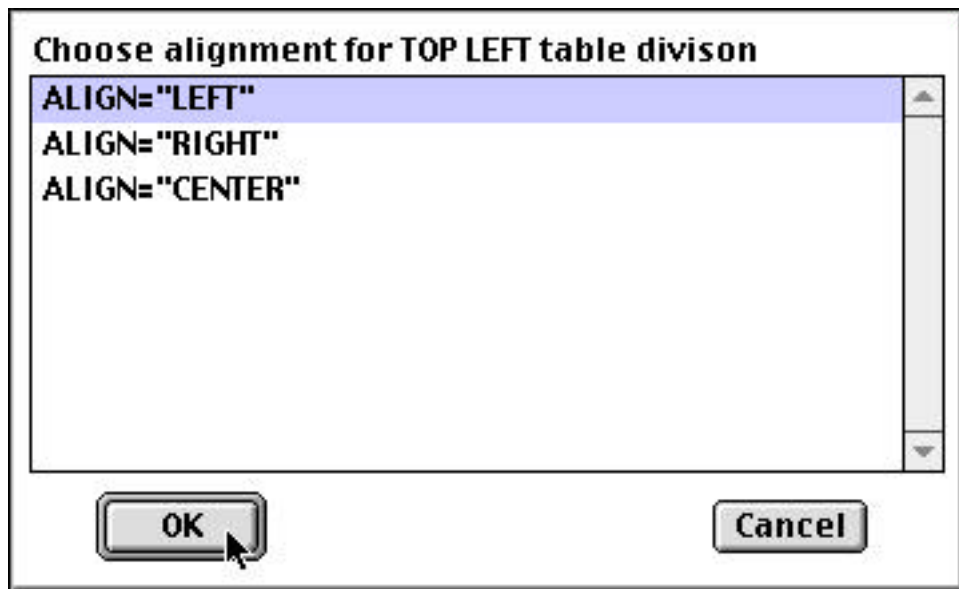


After you 'OK' this you will be asked for a font size.

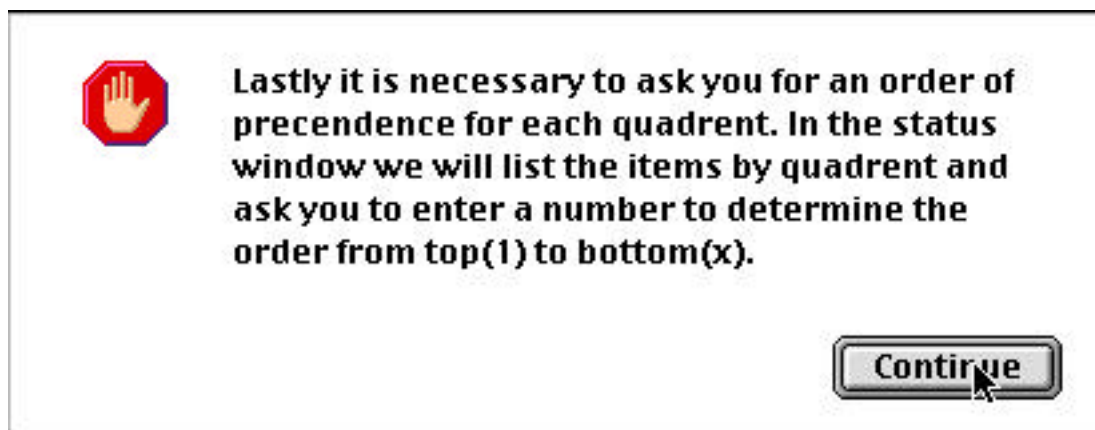
Note: This is font size as in HTML tag ranging from 1 - 7.



Text Justification: You set the Text Alignment of each cell in the table to LEFT, RIGHT or CENTER, with these dialog boxes.



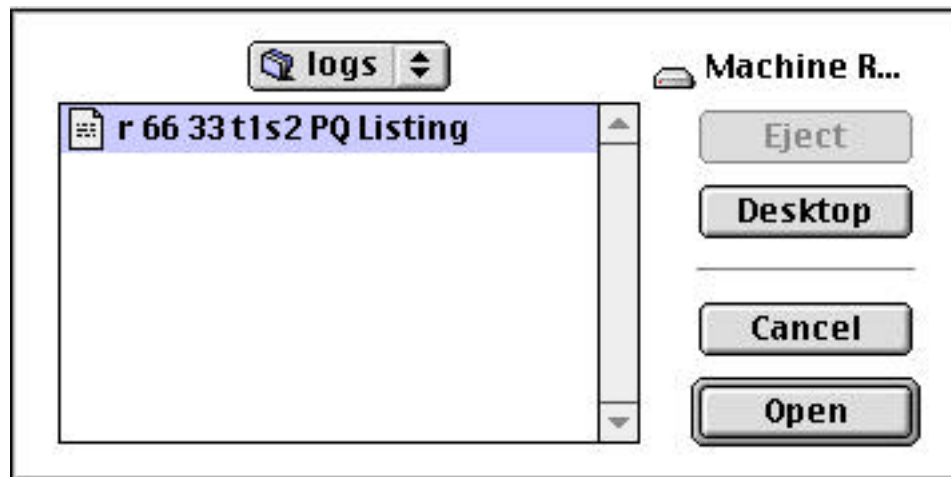
Item Order: This is the last thing you need to do to set up your template, other than save it. Deliverance will display in its own status window a list of the items assigned to each table cell, and prompt you to assign a number for each that will determine the order they are output.



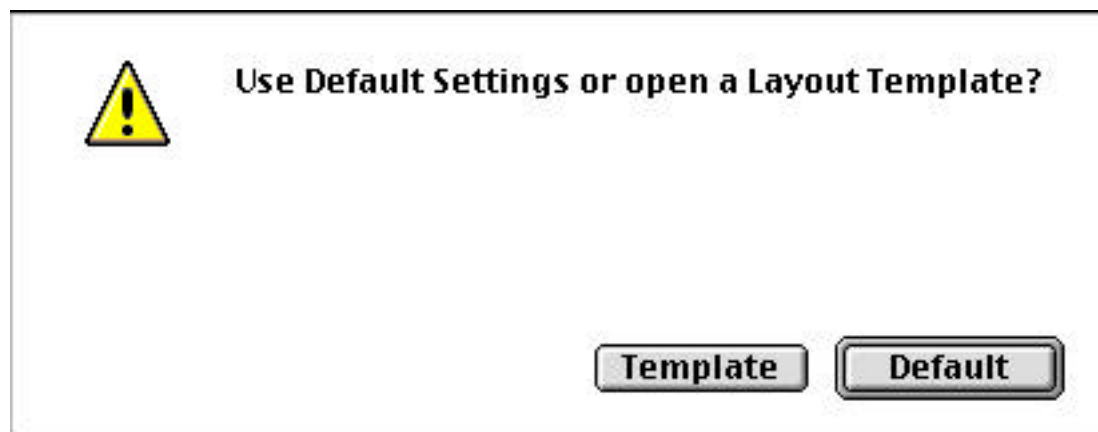
Save: Lastly click Default to save these changes as the 'default' settings or 'save as' to create additional I/O templates.

Processing PQ Logs: This is as simple as 1..2..3!

1. Open the PQ Log you want to use:

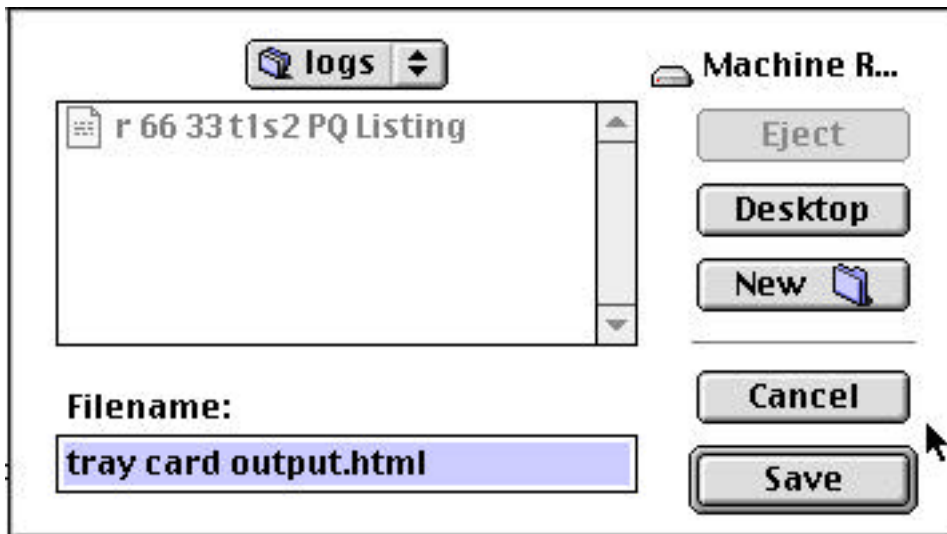


2. Choose your I/O template:



Click 'Default' for your standard settings or click 'Template to choose another I/O definition'

3. Name and save the tray card file.



That's it! Open the file in your favorite web browser and print.

Known Pitfalls: The user interface used for setting I/O parameters is a hack to say the least. One major shortcoming is that the 'Cancel' button does not work as expected in all of the dialogs. This may be addressed in the future but no promises!

Registration and Shareware policy: Deliverance is shareware. If it proves to be useful to you please send US\$10 with your name, address and email to:

Dave Ackerman
72 Empire Street
Allston, MA 02134

Distribution: You may freely distribute Deliverance as long as the entire package is kept together (including the documentation and all supporting files), it is not modified in any way and you do not charge for it.

Deliverance 1.02 ©1999 by David Ackerman. All rights reserved.

Disclaimer: Deliverance is provided "as is" and without warranty, express and implied, including but not limited to any implied warranties of merchantability and fitness for a particular purpose. In no event will Dave Ackerman be liable for any damages, including lost profits, lost savings, loss of data, or other incidental or consequential damages, even if Dave Ackerman is advised of the possibility of such damages, or for any claim by you or any third party.